



Crosstown Quilters Guild Block of the Month Pretty Purse Block (size unfinished 12½", finished 12")

Fabric Requirements

Background use cream print, cream on cream or muslin

Fabric for Purse med to dark colorful print

Coordinating Fabric for top edge and handle med to dark value

Cutting Instructions:

Background Fabric

A: 12½" x 1¾" (cut 2)

B: 4" square (cut 2)

C: 4½" x 3½"

D: 1" square (cut 2)

E: 3" x 1½" (cut 2)

F: 5½" x 1½" (cut 2)

G: 6½" x 2½" (cut 2)

Purse Bottom

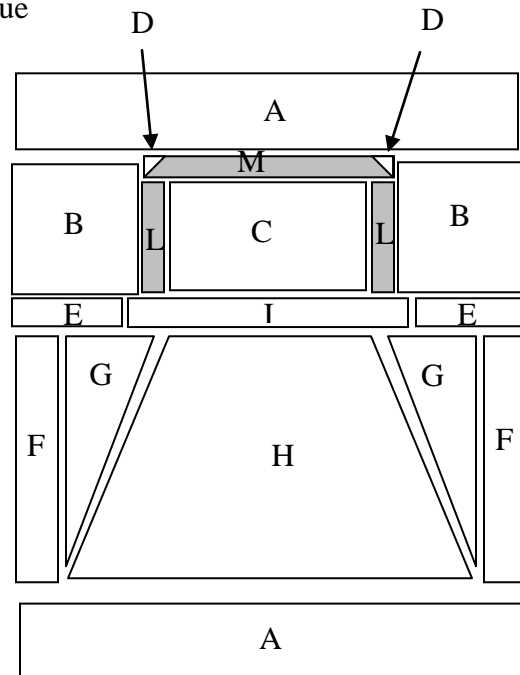
H: 11" x 5½" square

Top Edge and Purse Handle

I: 7½" x 1½"

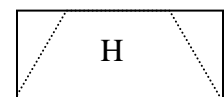
L: 3½" x 1" (cut 2)

M: 5½" x 1"



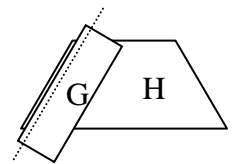
Cut the pieces described above and layout as shown

Purse: On piece H, mark 2¼" in from left top corner. Cut from this mark to the bottom left corner. Repeat on right side. Shape should be as shown.

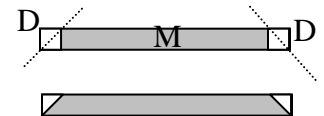


Place long side of G centered on newly cut left side of H, right sides together. Sew and flip open. Press. Repeat on right side.

Trim to 5½" x 10½".



Purse Top: Sew pieces E to both ends of piece I.



Handle: Place a D square on each end of M, right sides together. Sew on the diagonals, trim excess fabric, press open. Sew L's on the 3½" side of C. Sew the M assembly to top of LCL assembly. Attach pieces B to both sides.

Complete assembly of the block as shown in the diagram. Use a decorative button for a clasp on the Purse.